



&

**SÖS**  
SÖDERSJUKHUSET

PROUDLY PRESENT:

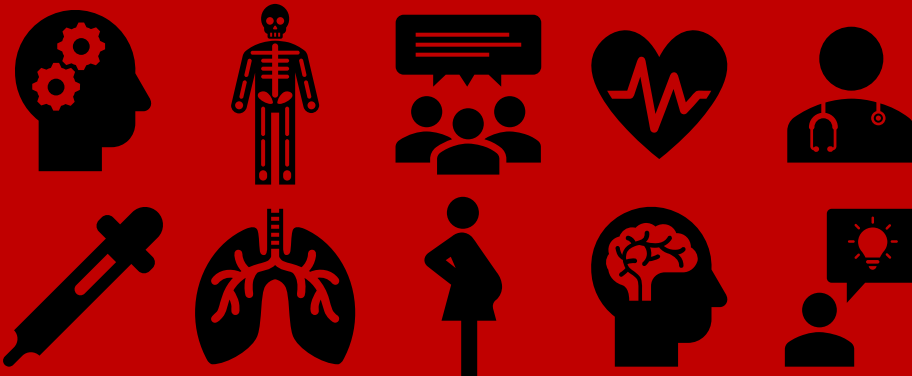
# EMERGENCY MEDICINE CORE COMPETENCES COURSE

Developing competence in Emergency Medicine through  
intensive simulation-training and group discussion.

2-4 September 2020  
Stockholm, Sweden

## This EMCC Course focuses on:

- The initial management of critically ill patients from all age groups
- Differential diagnosis and decision-making (with probability assessment, Bayes' theorem, test threshold, treatment threshold)
- ECG and acid-base interpretation
- Neurological evaluation
- Orthopedic evaluation
- Basic and advanced airway procedures and other relevant procedures in emergency medicine
- The difficult emergency delivery and newborn resuscitation
- Leadership and communication, including during a major Incident



**All participants are invited to fill in a pretest as a theoretical preparation for the course.**

**All participants receive a course manual and pocket-sized checklist compendium covering:**

- The initial management of > 30 critical syndromes
- The evaluation of patients presenting with one of 20 chief complaints

# Additional information

## Date

2-4 September 2020

## Language

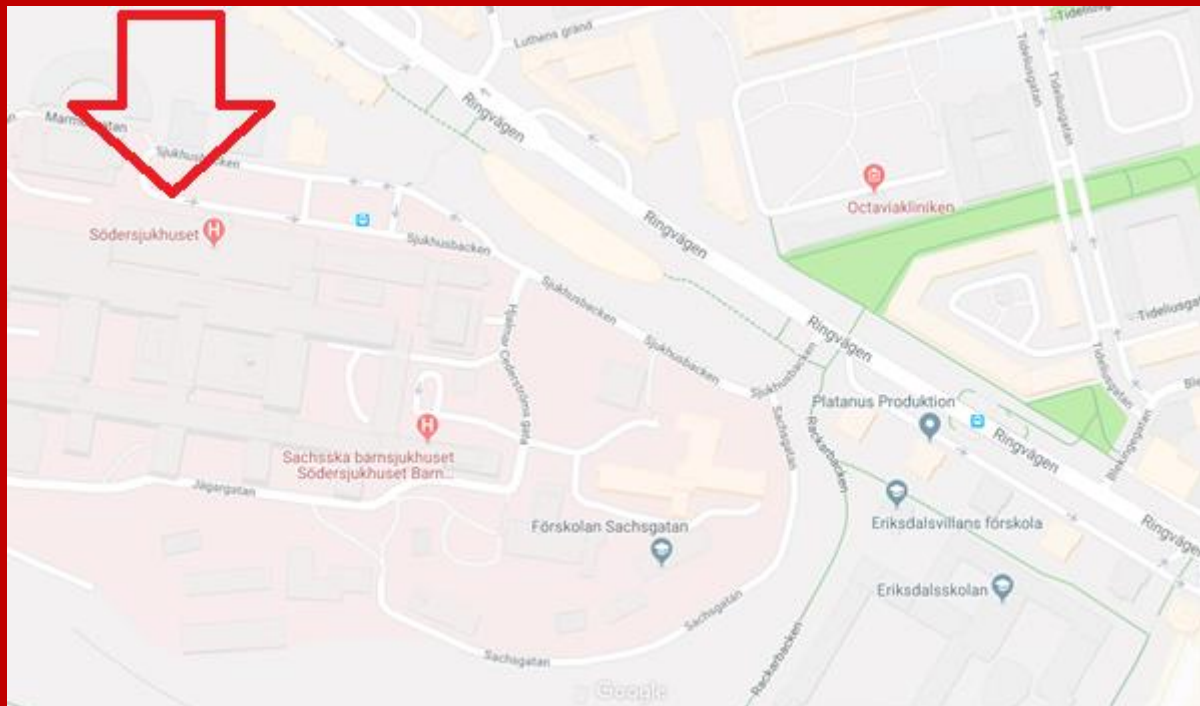
Both course content and stations will be provided in English.

## Location

Södersjukhuset AB/*Stockholm South General Hospital*

Sjukhusbacken 14

SE – 118 83 Stockholm – SWEDEN



## **Course director**

Cornelia Härtel

## **Faculty**

Emergency physicians with high level teaching and clinical experience

Nikolas Sbyriakis (UK/Greece)

Inger Søndergaard (Denmark)

Veronique Brabers (Belgium)

Hannelore Raemen (Belgium)

Gregor Prosen (Slovenia)

Metin Omerović (Slovenia)

Björn Alsén (Sweden)

Niklas Sandström (Sweden)

## **Contact for more information**

[nathalie.ekenberg@sl.se](mailto:nathalie.ekenberg@sl.se)

[cornelia.hartel@sl.se](mailto:cornelia.hartel@sl.se)

## **Costs**

6500 SEK exl VAT (for SWESEM members)

7000 SEK exl VAT (for non-SWESEM members)

## **Registration**

[nathalie.ekenberg@sl.se](mailto:nathalie.ekenberg@sl.se)